

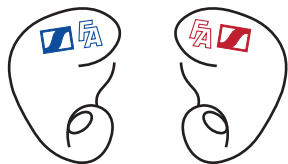
FA 500 Custom

Quick Guide | Kurzanleitung |

The best of two brands combined in one custom in-ear monitor

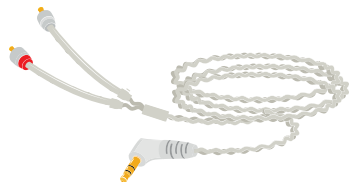
Developed and handcrafted in Germany

IN THE BOX



Safety
Guide

Quick
Guide



Leather bag



Cleaning tool



HOW TO WEAR

left
blue



right
red



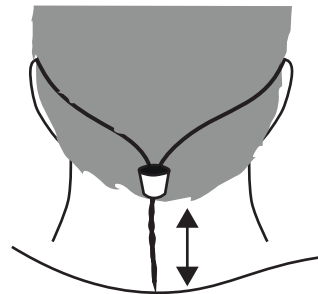
left
blue



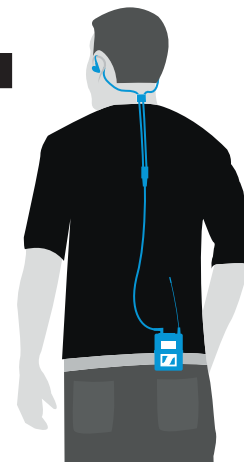
right
red



HOW TO WEAR



CABLE ROUTING



SENNHEISER



FISCHER AMPS

FA 500 Custom

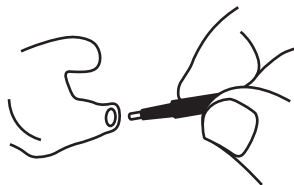
Quick Guide | Kurzanleitung |

The best of two brands combined in one custom in-ear monitor

Developed and handcrafted in Germany

CLEANING

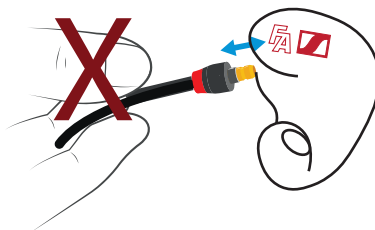
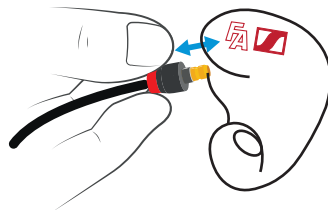
Use cleaning tool to
remove earwax in sound canal steady.



Use disinfection wipe to clean the
housing and the cable steady.

CHANGING CABLE

Attention !



SPECIFICATIONS

FA 500 CUSTOM

Frequency response	6 Hz - 20 kHz
Impedance	16 ohms
Sound pressure level (1 kHz/1 V _{rms})	126 dB
THD (1 kHz, 94 dB)	< 0.08 %
Noise attenuation	up to 26 dB
Magnetized field strength	2 mT
Operating temperature	-5 °C to +50 °C
Storage temperature	-20 °C to +70 °C
Relative air humidity	< 95 %

Use this QR-Code for service informations
(warranty, fit adjustment, spare parts)



SCAN ME

fischer-amps.de/FA-500-custom-in-ears

FISCHER AMPS,
Hans-Ulrich-Breymann-Str. 3, 74706 Osterburken / Germany
Phone: +49 6291 64 87 90, Mail: info@fischer-amps.de